



IMPORTANT INFORMATION

Dear Customer

Thank you for choosing to purchase a product manufactured by ICON Health & Fitness – the world's leading supplier of home fitness equipment.

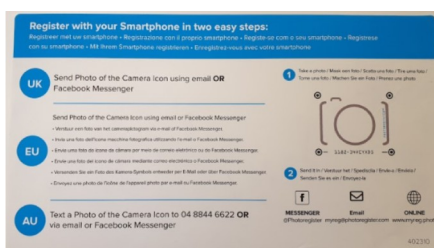
We hope that you are totally satisfied with your purchase and that your equipment thoroughly exceeds your expectations.

Being a product manufactured by ICON, you can be certain it is built to the highest standard and packed with more than enough features to keep your training program varied, including our latest iFit Coach technology powered by Google Maps.

In order to unlock the full potential of iFit Coach please email salesuk@iconeurope.com requesting your **iFit Coach Activation Code, along with your Proof of Purchase showing the machine/product code, retailer and date of purchase.

Unfortunately we will be unable to provide any codes unless a Proof of Purchase is attached to your email

The below code refers to Product Warranty registration and is not related to your iFIT code.



UK Sales Team

ICON Health and Fitness Ltd

Please note that your warranty is subject to the completion of the warranty registration card supplied with your product and must be returned within 28 days of receiving your equipment

****Request for iFit Activation Code must be made within 3 months of purchase**

IMPORTANT INFORMATION

DO NOT THROW AWAY

IMPORTANT INFORMATION